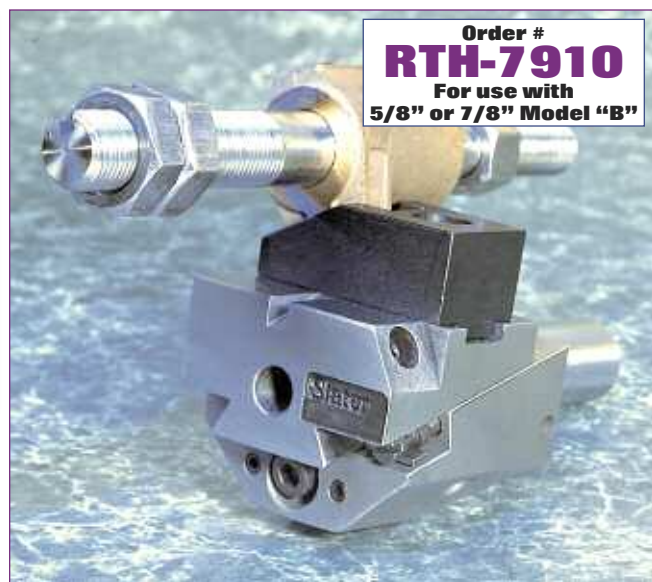
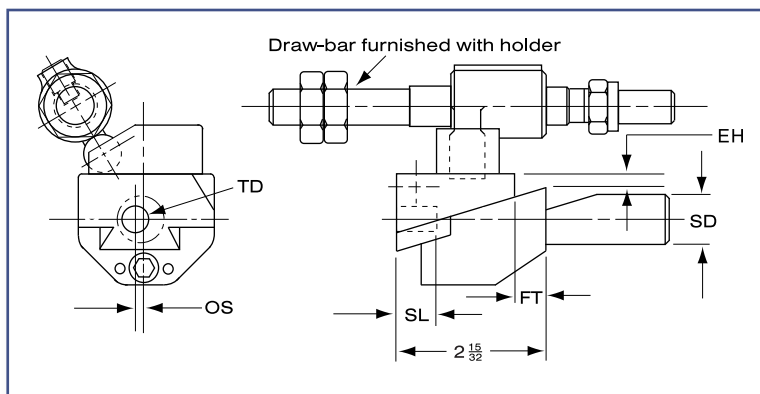


Recessing Tool Holder



(TD)	Tool Diameter	3/8
(SD)	Shank Diameter	3/4
(OS)	Tool Offset from Shank	.031
(FT)	Forward Travel	.562
(EH)	Expansion Height	.161
(SL)	Shank Length of Tool	3/4

Recess tool draw-bars hold the top slide of the recess holder in place to activate the upward cutting of a recess tool. Holder comes equipped with draw bar. Replacement Order No. **RTD-71001**.

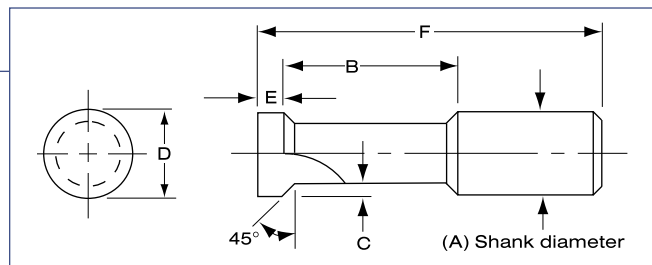
Recess Tool Blanks

Hardened and Ready To Use



Used to make internal grooves, undercuts and chamfers. Pre-notched at 90°, and centers provided at both ends.

A	B	C	D	E	F
3/8	3/4	.050	.310	.100	1-1/2
3/8	3/4	.060	.380	.120	1-1/2



How to set holder after

Maintenance

Step 1

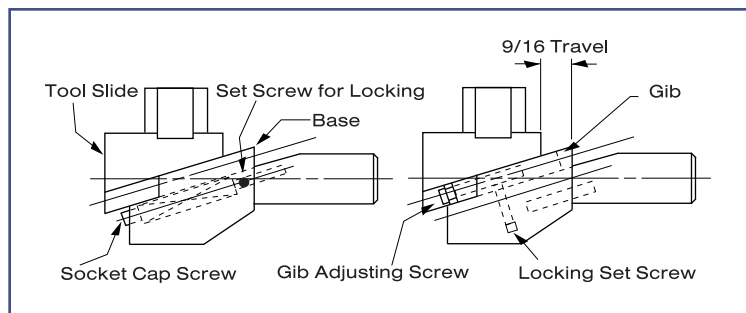
- Assemble tool slide on base with spring and socket head cap screw set to 9/16 travel of tool holder.
- Lock set screw to hold socket head cap screw in place.
- Allow taper gib to be quite loose.

Step 2

- Compress holder in vise or on an arbor press to 9/16 travel.
- Tighten gib adjusting screw until gib will hold tool slide in maximum travel position.

Step 3

- Clamp shank of base in vise.
- Loosen gib adjusting screw very slowly until holder snaps open.
- Tighten locking set screw to hold gib adjusting screw in place.
- Holder is ready for use.



18

Order: **586-465-5000**
Fax: **586-465-3030**

SLATER TOOLS™