

## Flat Forming Tool Holder

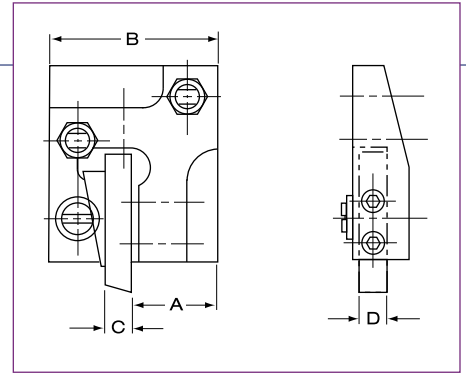
Slater Vertical Slide

For use with 5/8" or 7/8" Model "B" Davenport

Forming flat toolholders use tool bit tooling. there are two styles.

Order #

**FFT-7850**

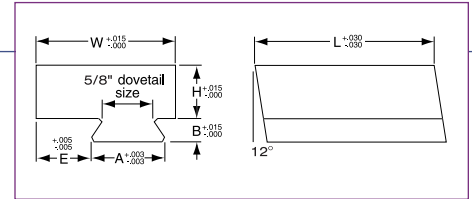


Machine Model	Position	Tool Bit Size	A	B	C
Model "B"	4th/"D"	1/2 x 1/2 x 2	1-1/2	3	1/2

## Forming Dovetail Blanks

Hardened and Ground

H	W	L	A	B	E	M-42	T-15	76 PM
1	1	1-3/4	.951	.297	1/32	<b>FDB-7330</b>	<b>FDB-7630</b>	<b>FDB-7830</b>
1	1-1/4	1-3/4	.951	.297	9/32	<b>FDB-7335</b>	<b>FDB-7635</b>	<b>FDB-7835</b>
1	1-1/2	1-3/4	.951	.297	17/32	<b>FDB-7339</b>	<b>FDB-7639</b>	<b>FDB-7839</b>



## Forming Circular Blanks

Pin Type - Hardened and Ground [2" Dia. • 9/16" Center Hole]



**M-42**

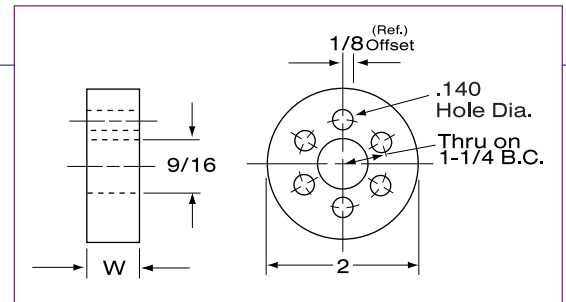
**T-15 PM**

**76 PM**

Width	Order No.
3/8	<b>FCB-7422</b>
5/8	<b>FCB-7425</b>
7/8	<b>FCB-7427</b>

Width	Order No.
3/8	<b>FCB-7722</b>
5/8	<b>FCB-7725</b>
7/8	<b>FCB-7727</b>

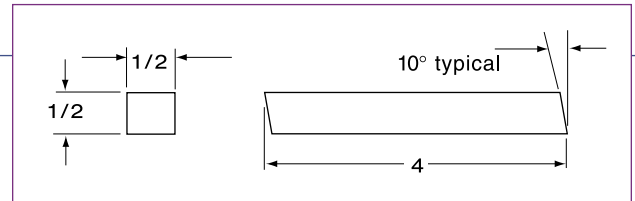
Width	Order No.
3/8	<b>FCB-7922</b>
5/8	<b>FCB-7925</b>
7/8	<b>FCB-7927</b>



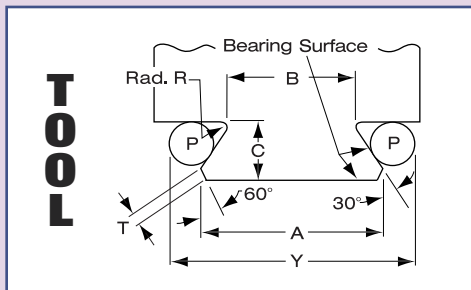
## Turning Tool Bits

Hardened and Ground

Used for single point turning.



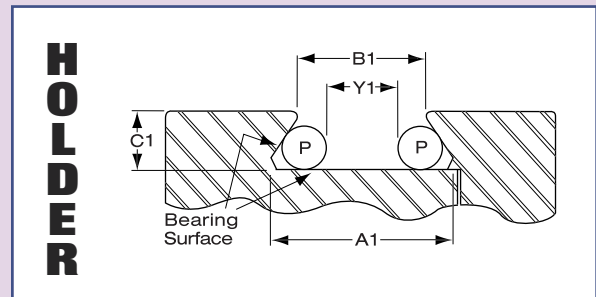
## Tool & Tool Holder Dimensions for Form & Shave Tool Holder



Size	B	C	A	Y	P	R	T
1/2	.481	13/64	.715	.993	3/16	1/32	1/32
5/8	.609	19/64	.951	1.292	1/4	1/32	1/16

Constant Factors For 30° angle	
P	D
1/2	.875 .3415
5/8	.250 .6830

Dovetail Size	Y=B+D	Y1=A1-D
Sharp Corner Dimension	A=B+CF	A1=B1+C/F
Dimension for Dovetail of Roll	B=A-CF	B1=A1-C/F
Formula Aids for Dovetail	D=P (COTAN. $\frac{90^\circ\text{-ANGLE}}{2}$ ) +P	
	F=2 TAN. ANGLE=1.1547	



Size	B1	C1	A1	Y1
1/2	.500	3/16	.716	.2045
5/8	.625	9/32	.951	.268



Order: **586-465-5000**

Fax: **586-465-3030**

**13**