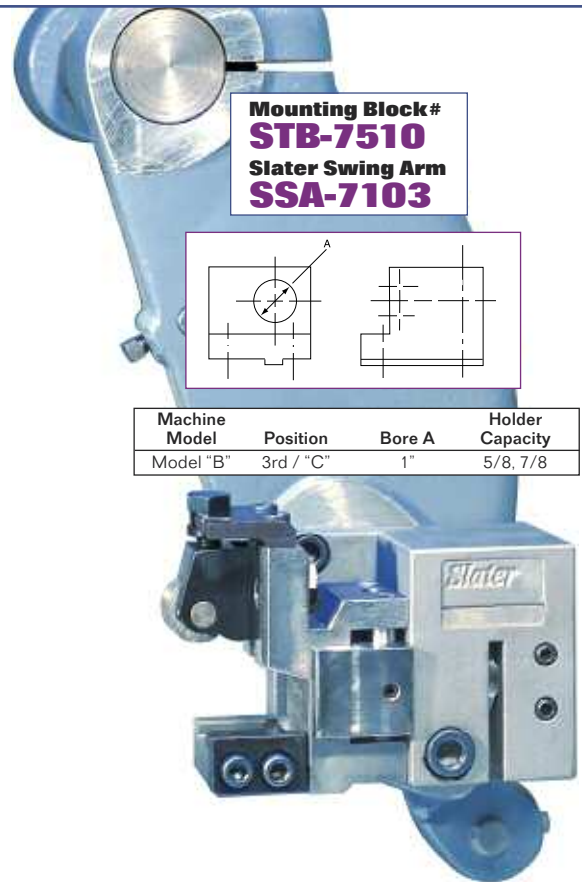
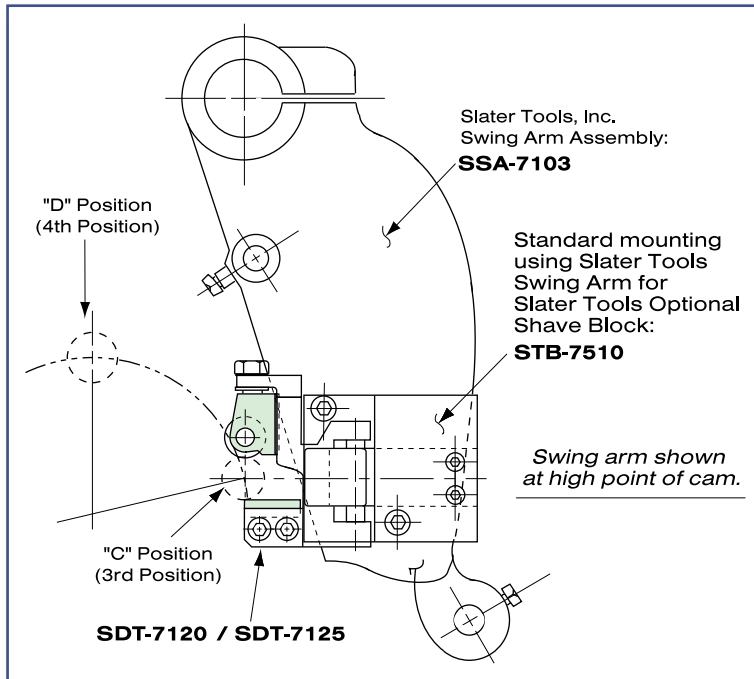
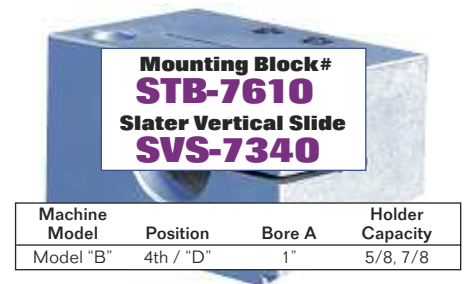
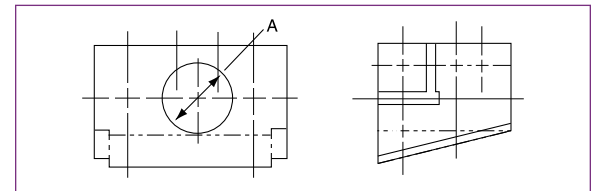
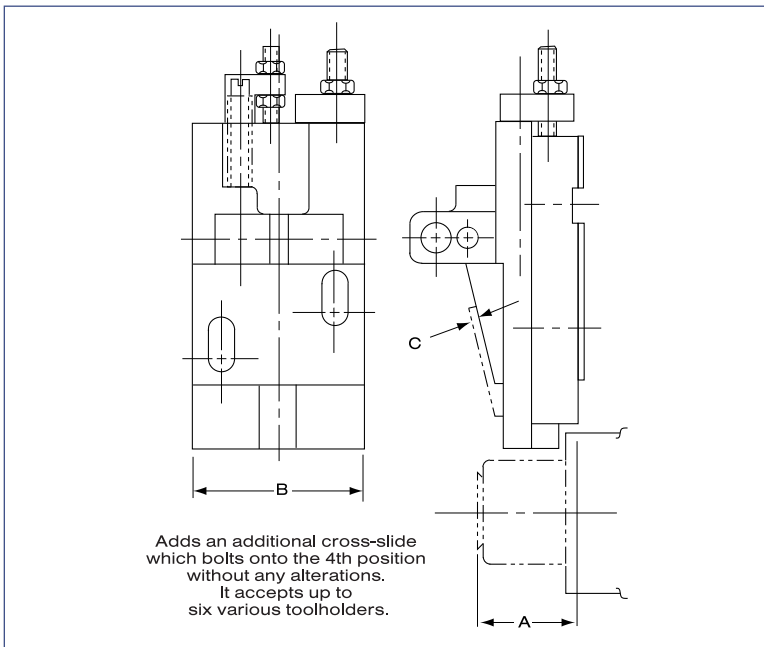


## 3rd ("C") Position - Slater Swing Arm



## 4th ("D") Position - Slater Vertical Slide



Machine Model	Position	A	B	C
Model "B"	4th / "D"	1-23/32	3	1/8

Update your Davenport with Slater Tools universal type slide. It will give you a new approach to tooling, eliminating the need for special tooling or semi-standard setups. No alterations are required for mounting. No adjustments of other stations are needed to work with a stationary 4th position slide. It will enable you to save time on initial job setups, on minor adjustments during job runs, and when changing from one job to another.